



**Cost Centre Expense report**  
**Rolling 12 month Summary analysis**  
**Financial Period 08-11**

Run: 22/01/2011 17:17  
 Budget: BUD09V2  
 Forecast: FCT09V1

**Cost Centre**      [Chief Executive > Engineering Services > Asset Management](#)

151 Northern Perimeter Rd  
 Birmingham  
 B5 7TH

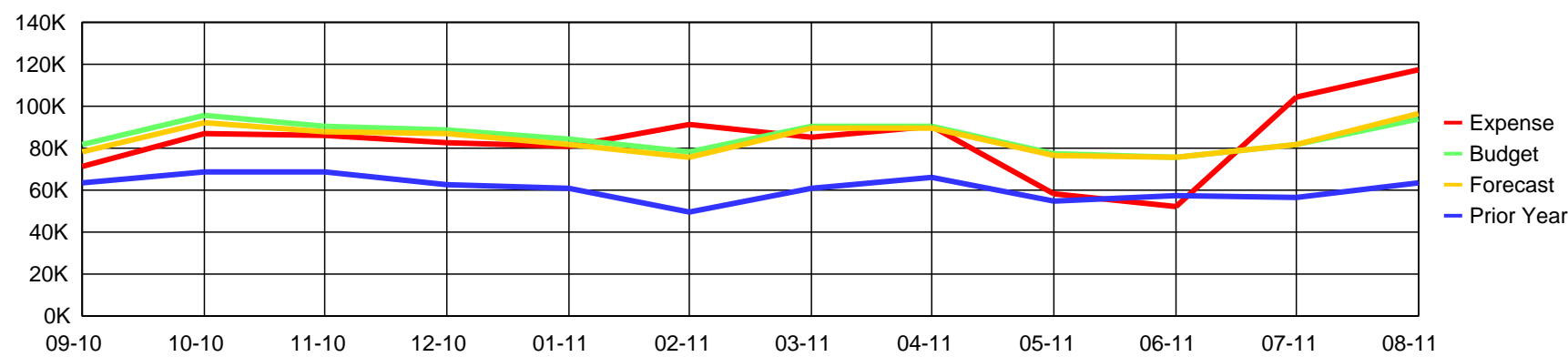
**Owner**            **Chris Hassle** Head of Asset Management

**Email**            [chris.hassle@visioncorp.com](mailto:chris.hassle@visioncorp.com)

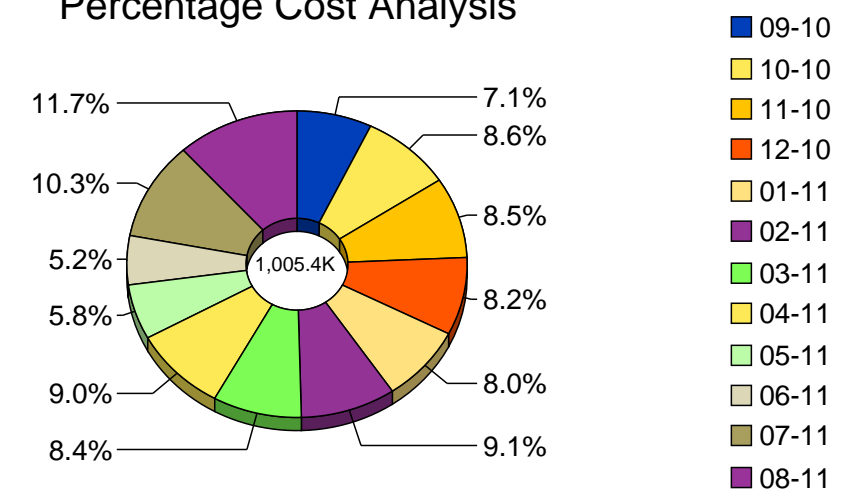
0121 237 3732

Financial Period	<a href="#">09-10</a>	<a href="#">10-10</a>	<a href="#">11-10</a>	<a href="#">12-10</a>	<a href="#">01-11</a>	<a href="#">02-11</a>	<a href="#">03-11</a>	<a href="#">04-11</a>	<a href="#">05-11</a>	<a href="#">06-11</a>	<a href="#">07-11</a>	<a href="#">08-11</a>
<b>Expense</b>	<b>71,669</b>	<b>86,750</b>	<b>85,870</b>	<b>82,440</b>	<b>80,746</b>	<b>91,071</b>	<b>84,873</b>	<b>90,418</b>	<b>58,407</b>	<b>52,034</b>	<b>103,974</b>	<b>117,164</b>
<b>Budget</b>	81,681	95,378	90,052	88,975	84,736	78,094	90,569	90,640	76,968	75,784	81,662	94,232
<b>% of Budget</b>	88	91	95	93	95	117	94	100	76	69	127	124
<b>Forecast</b>	78,607	92,401	87,398	86,707	81,827	75,690	89,299	89,703	76,230	75,653	82,046	96,120
<b>% of Forecast</b>	91	94	98	95	99	120	95	101	77	69	127	122
<b>Prior Year</b>	63,093	68,555	68,866	63,022	60,755	49,715.44	61,253	66,272	54,484	57,478	56,383	63,765
<b>% of Prior Year</b>	114	127	125	131	133	183	139	136	107	91	184	184

**Expense Trend Analysis by Cost Centre**



**Percentage Cost Analysis**





**Cost Centre Expense report**  
**Rolling 12 month Summary analysis**  
**Financial Period 08-11**

Run: 22/01/2011 17:17

Budget: BUD09V2

Forecast: FCT09V1

Cost Centre [Chief Executive > Engineering Services > Engineering Core](#)

151 Northern Perimeter Rd  
 Birmingham  
 B5 7TH

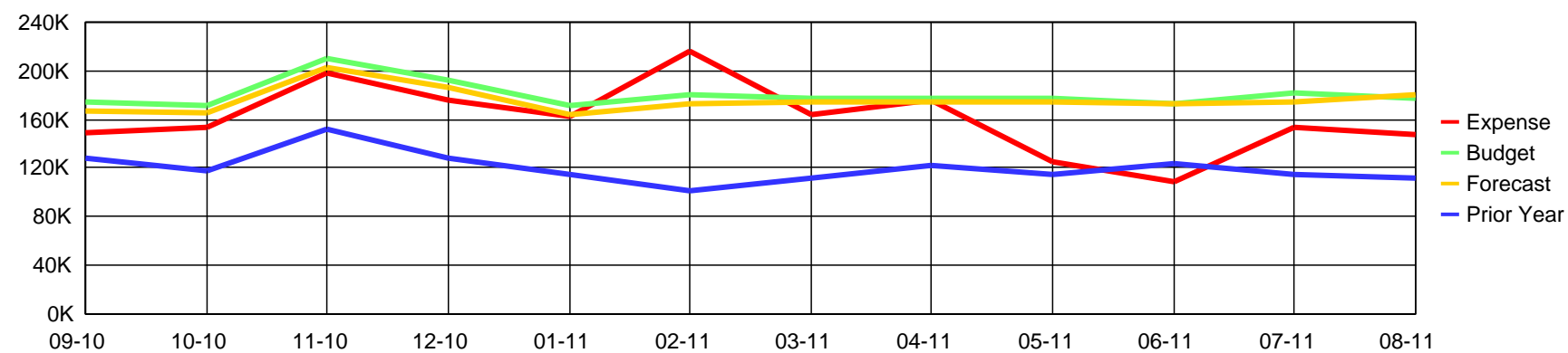
Owner **Mr. Stefan Bartels** Head of Engineering

Email [stefan.bartels@ukrail.com](mailto:stefan.bartels@ukrail.com)

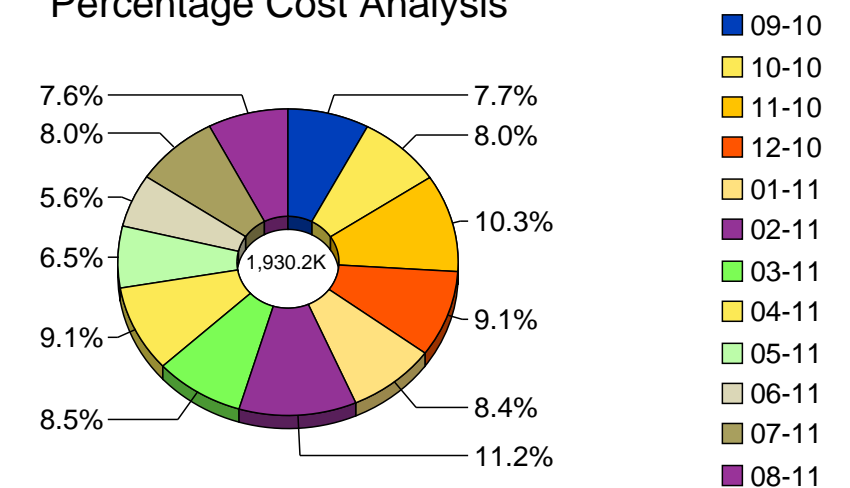
0121 237 3732

Financial Period	<a href="#">09-10</a>	<a href="#">10-10</a>	<a href="#">11-10</a>	<a href="#">12-10</a>	<a href="#">01-11</a>	<a href="#">02-11</a>	<a href="#">03-11</a>	<a href="#">04-11</a>	<a href="#">05-11</a>	<a href="#">06-11</a>	<a href="#">07-11</a>	<a href="#">08-11</a>
<b>Expense</b>	<b>149,173</b>	<b>153,501</b>	<b>198,789</b>	<b>176,101</b>	<b>161,741</b>	<b>215,445</b>	<b>164,163</b>	<b>176,485</b>	<b>125,619</b>	<b>108,093</b>	<b>153,764</b>	<b>147,347</b>
<b>Budget</b>	174,202	170,756	210,141	192,436	171,051	179,759	176,819	176,978	176,661	173,405	181,862	176,712
<b>% of Budget</b>	86	90	95	92	95	120	93	100	71	62	85	83
<b>Forecast</b>	166,518	164,802	202,937	186,767	164,263	173,148	173,997	174,896	174,634	173,047	175,114	180,697
<b>% of Forecast</b>	90	93	98	94	98	124	94	101	72	62	88	82
<b>Prior Year</b>	127,732	117,111	152,636	127,556	115,094	101,717.47	111,673	122,828	114,830	123,065	115,504	112,394
<b>% of Prior Year</b>	117	131	130	138	141	212	147	144	109	88	133	131

**Expense Trend Analysis by Cost Centre**



**Percentage Cost Analysis**





**Cost Centre Expense report**  
**Rolling 12 month Summary analysis**  
**Financial Period 08-11**

Run: 22/01/2011 17:17  
 Budget: BUD09V2  
 Forecast: FCT09V1

Cost Centre [Chief Executive > Engineering Services > Infrastructure](#)

151 Northern Perimeter Rd  
 Birmingham  
 B5 7TH

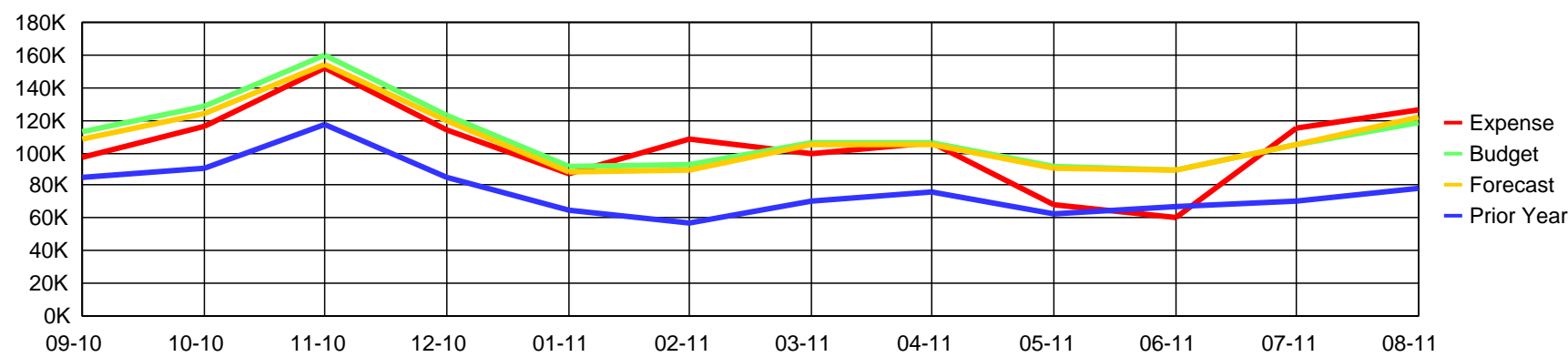
Owner **Ms. Claudia Renner** Head of Infrastructure

Email [claudia.renner@ukrail.com](mailto:claudia.renner@ukrail.com)

0121 237 3732

Financial Period	<a href="#">09-10</a>	<a href="#">10-10</a>	<a href="#">11-10</a>	<a href="#">12-10</a>	<a href="#">01-11</a>	<a href="#">02-11</a>	<a href="#">03-11</a>	<a href="#">04-11</a>	<a href="#">05-11</a>	<a href="#">06-11</a>	<a href="#">07-11</a>	<a href="#">08-11</a>
<b>Expense</b>	<b>97,504</b>	<b>116,417</b>	<b>151,739</b>	<b>113,660</b>	<b>87,496</b>	<b>108,839</b>	<b>99,289</b>	<b>106,067</b>	<b>68,009</b>	<b>60,042</b>	<b>115,464</b>	<b>126,219</b>
<b>Budget</b>	112,521	128,879	160,104	123,462	91,929	92,618	106,250	106,338	91,209	89,730	104,785	118,976
<b>% of Budget</b>	87	90	95	92	95	118	93	100	75	67	110	106
<b>Forecast</b>	107,911	124,579	154,796	120,060	88,697	89,613	104,698	105,193	90,288	89,567	105,313	121,493
<b>% of Forecast</b>	90	93	98	95	99	121	95	101	75	67	110	104
<b>Prior Year</b>	84,639	90,136	117,732	84,533	65,283	57,144.30	70,420	76,555	63,105	66,848	70,026	78,354
<b>% of Prior Year</b>	115	129	129	134	134	190	141	139	108	90	165	161

**Expense Trend Analysis by Cost Centre**



**Percentage Cost Analysis**

